

# TRITOFLEX

ADVANCED POLYMER SEALANTS

WET SURFACE  
APPLICATION

LONGER  
SHELF LIFE

LOW VOC  
LOW ODOR

EXCELLENT  
WEATHER  
RESISTANCE

OUTPERFORMS  
SILICONE

**TRITON**  
MIDDLE EAST

+971 6767 2327

info@triton.me

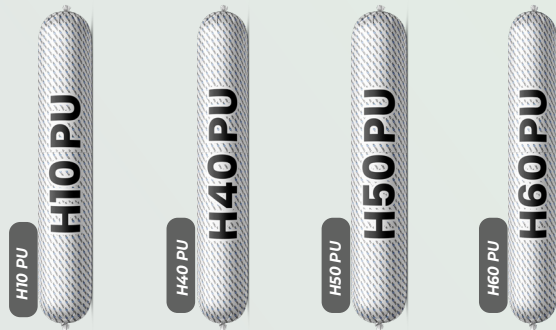
www.triton.me

New Industrial Area, Umm Al-Quwain,  
UAE, P.O Box :3350

**ELEVATE** Your  
SEALING AND BONDING  
**EXPERIENCE**



# CONSTRUCTION



## High-performance hybrid sealant designed for demanding construction needs.

SG : 1.15±0.05  
Tensile : 0.6-1 N/mm<sup>2</sup>  
Elongation : >250%  
Hardness : 30±3  
MAF : ±25%

### MAIN FEATURES

- Environmentally friendly
- High tensile strength and durability
- Outstanding adhesion without primers

SG : 1.42±0.02  
Tensile : 1-1.5 N/mm<sup>2</sup>  
Elongation : 600-700%  
Hardness : 25-30  
MAF : ±50%

SG : 1.50±0.05  
Tensile : 1-1.3 N/mm<sup>2</sup>  
Elongation : 300-500%  
Hardness : 30-40  
MAF : ±25%

### USES/APPLICATIONS

- Heavy-duty construction joints
- Structural sealing in buildings
- Sealing demanding HVAC and gutter systems

SG : 1.42±0.02  
Tensile : 1-1.2 N/mm<sup>2</sup>  
Elongation : 600-800%  
Hardness : 20-30  
MAF : ±50%

# SPECIALITY



## Industry Speciality Sealants / Adhesives

SG: 1.05 ± 0.03  
Tensile: >1.8 N/mm<sup>2</sup>  
Elongation: >300%  
Hardness Shore A: 30-40

### MAIN FEATURES

- Good initial tack
- No crack or discolour.
- Transparent

### APPLICATION

- Sealing of glass and other transparent materials.
- Interior fittings and assembly work

SG: 1.60 ± 0.03  
Tensile: 0.8 - 1.2 N/mm<sup>2</sup>  
Elongation: 400 - 550%  
Hardness, Shore A: 40-50

### MAIN FEATURES

- Paintable
- Solvent-free
- No shrinkage
- Develops strength fast

### APPLICATION

- Direct glazing and gap filling applications.
- In automotive, bus and truck glass manufacturing.

SG: 1.38 - 1.42  
Tensile: 1.9 - 2.5 N/mm<sup>2</sup>  
Elongation: >400%  
Hardness, Shore A: 40-50

### MAIN FEATURES

- Paintable
- Solvent free
- Isocyanate free
- Noncorrosive

### APPLICATION

- Suitable for making elastic, vibration-resistant joint seals.
- For above and below the waterline for the sealing of joints.

SG: 1.55 ± 0.05  
Tensile: 1.3 N/mm<sup>2</sup>  
Elongation: >400%  
Hardness, Shore A: 40 - 45

### MAIN FEATURES

- UV Resistant
- Low VOC
- Excellent adhesion
- Non-Levelling/ Non-Sag

### APPLICATION

- Suitable for repair and seal your RV's roof top and roof fixtures.
- Sealing EPDM rubber, TPO, fiberglass, wood, aluminium, steel and masonry.



Patch & Repair

## Advanced hybrid polymer sealant for Roofing applications

SG: 1.40 ± 0.02  
Tensile: 0.6 - 1.2 N/mm<sup>2</sup>  
Elongation: >400%  
Hardness Shore A: 36-42

### MAIN FEATURES

- Low VOC
- UV resistance
- Silicone and Isocyanate free
- Good Adhesion

### APPLICATION

- Crack filling and sealing
- Sealing of bituminous end joint
- Roof capping
- Sealing and filling of leaks on flat roofs.



Gutter Flashing

SG: 1.40 - 1.44  
Tensile: 1 - 1.5 N/mm<sup>2</sup>  
Elongation: >600%  
Hardness Shore A: 27-33

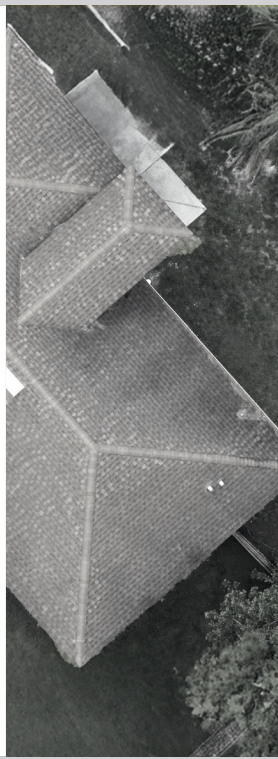
### MAIN FEATURES

- Low Odor
- Low VOC
- UV resistant
- Paintable

### APPLICATION

- To seal construction joints, waterproof rivet seams and roof rails.
- To seal roof vents, flashing and gutters,
- Skylights and drain spouts.

# ROOFING



Window Door

SG: 1.42  
Tensile: 1 N/mm<sup>2</sup>  
Elongation: >600%  
Hardness Shore A: 28-32

## Advanced hybrid polymer sealant for window, door, siding and trim applications

### MAIN FEATURES

- Silicone-free alternative
- UV and weather-resistant
- Antibacterial and Antifungal
- Good adhesion to multiple surfaces

### USES/APPLICATIONS

- Used for caulking & sealing of windows, doors, siding and trim.
- Joint sealing to precast concrete & brickwork.
- Perimeter, curtain wall sealing, glazing systems and cap beading.

# WINDOW, DOOR



# GRAB ADHESIVE



## High Grab Sealants / Adhesives

SG: 1.55 ± 0.03  
Tensile: 1 - 1.5 N/mm<sup>2</sup>  
Elongation: >250%  
Hardness, Shore A: 52 ± 05

### MAIN FEATURES

- Permanently elastic
- No shrinkage and bubble free
- Paintable with all water-based paints

### APPLICATION

- Suitable for bonding application in the building industry.
- Elastic bonding in construction joints.
- Suitable for floor joints, low movement wall joints.

SG: 1.65 ± 0.02  
Tensile: 2.42 N/mm<sup>2</sup>  
Elongation: >450%  
Hardness, Shore A: 55 ± 03

### MAIN FEATURES

- Permanently elastic
- No shrinkage and bubble free
- Paintable with all water-based paints

### APPLICATION

- Suitable for bonding application in the building industry.
- Elastic bonding in construction joints.
- Suitable for floor joints, low movement wall joints.

# UNIVERSAL



## Multi Sealants For Interior and Exterior Applications

SG: 1.03 ± 0.02  
Tensile: 1.2 - 1.8 N/mm<sup>2</sup>  
Elongation: >300%  
Hardness, Shore A: 30±2

### MAIN FEATURES

- Low VOC
- UV resistant
- Low odor
- Excellent adhesion

### APPLICATION

- Sealing around doors & window frames.
- Sealing joints around bathrooms and kitchens
- Sealing around skirtings, trims, and floor-to-wall connections

SG: 1.42 ± 0.02  
Tensile: 1.2 - 1.5 N/mm<sup>2</sup>  
Elongation: >600%  
Hardness, Shore A: 27 - 33

### MAIN FEATURES

- Low VOC
- UV resistant
- Paintable
- Excellent adhesion.

### APPLICATION

- Sealing window and door perimeter joints.
- Sealing joints in facade and metal clapping joints
- Sealing balcony, parapet and masonry joints

# WEATHER



## Advanced STP hybrid weather sealant with improved performance and flexibility

SG: 1.40 - 1.44  
Tensile: 1 - 1.5 N/mm<sup>2</sup>  
Elongation: >600%  
Hardness Shore A: 27-33  
MAF: ±50

### MAIN FEATURES

- General glass assemblies
- Top sealing in glazing systems
- Basic connecting joints in buildings

SG: 1.42 ± 0.02  
Tensile: 1 N/mm<sup>2</sup>  
Elongation: >700%  
Hardness Shore A: 25±5  
MAF: ±50

### USES/APPLICATIONS

- To seal concrete construction joints.
- Waterproof rivet seams and roof rails.
- Perimeter joints around windows and doors



SG: 1.03 ± 0.02  
Tensile: 1.2 - 1.8 N/mm<sup>2</sup>  
Elongation: >300%  
Hardness Shore A: 28-32

## Advanced hybrid polymer sealant for kitchen and bath applications

### MAIN FEATURES

- Water resistance
- Shrink and crack proof
- Suitable for interior use
- Low Odor and VOC compliant

### USES/APPLICATIONS

- Ideal for sealing around kitchen, bathroom
- Suitable for sealing bathtubs, showers, baseboards
- Sealing sinks, countertops, vanities
- Used to seal vents, ducts, interior trim & fixtures

# KITCHEN & BATH



H60 SL



Tritobond PA40

## High-performance hybrid adhesive/coating for flooring and waterproofing applications.

SG: 1.42 - 1.48  
Tensile: 0.6 - 1 N/mm<sup>2</sup>  
Elongation: >300%  
Hardness, Shore A: 22 - 28

### MAIN FEATURES

- Easy to apply.
- Isocyanate free.
- Resistant to water and frost.
- Superior UV and weather resistance

### APPLICATION

- Roofs, pedestrian deck.
- Old bitumen felts, asphalt felts, EPDM, and PVC membranes.
- On bridge decks, tunnels, stadium stands, car parks.

SG: 1.15±0.03  
Open time: 10 - 20 minutes  
Curing time: 24 - 48 Hrs

### MAIN FEATURES

- Excellent water resistance
- Elastic, shear-resistant adhesive
- Strong permanent bond for flooring

### APPLICATION

- Suitable for wooden floor joints
- Ideal for parquet flooring installation

# FLOORING





# TRITOFLEX

ADVANCED POLYMER SEALANTS

**W70 C  
W70C LM**

**WEATHER SEALANTS**



**CRYSTAL CLEAR  
SEALANTS**

**DOOR AND WINDOW  
SEALANTS**



**ROOFING SEALANTS**



**MARINE  
SEALANTS**



**BATH AND KITCHEN  
SEALANTS**



**SELF LEVELING  
SEALANTS**



**FLOORING  
ADHESIVE**



**HIGH GRAB  
ADHESIVE**



**AUTOMOTIVE  
SEALANTS**

